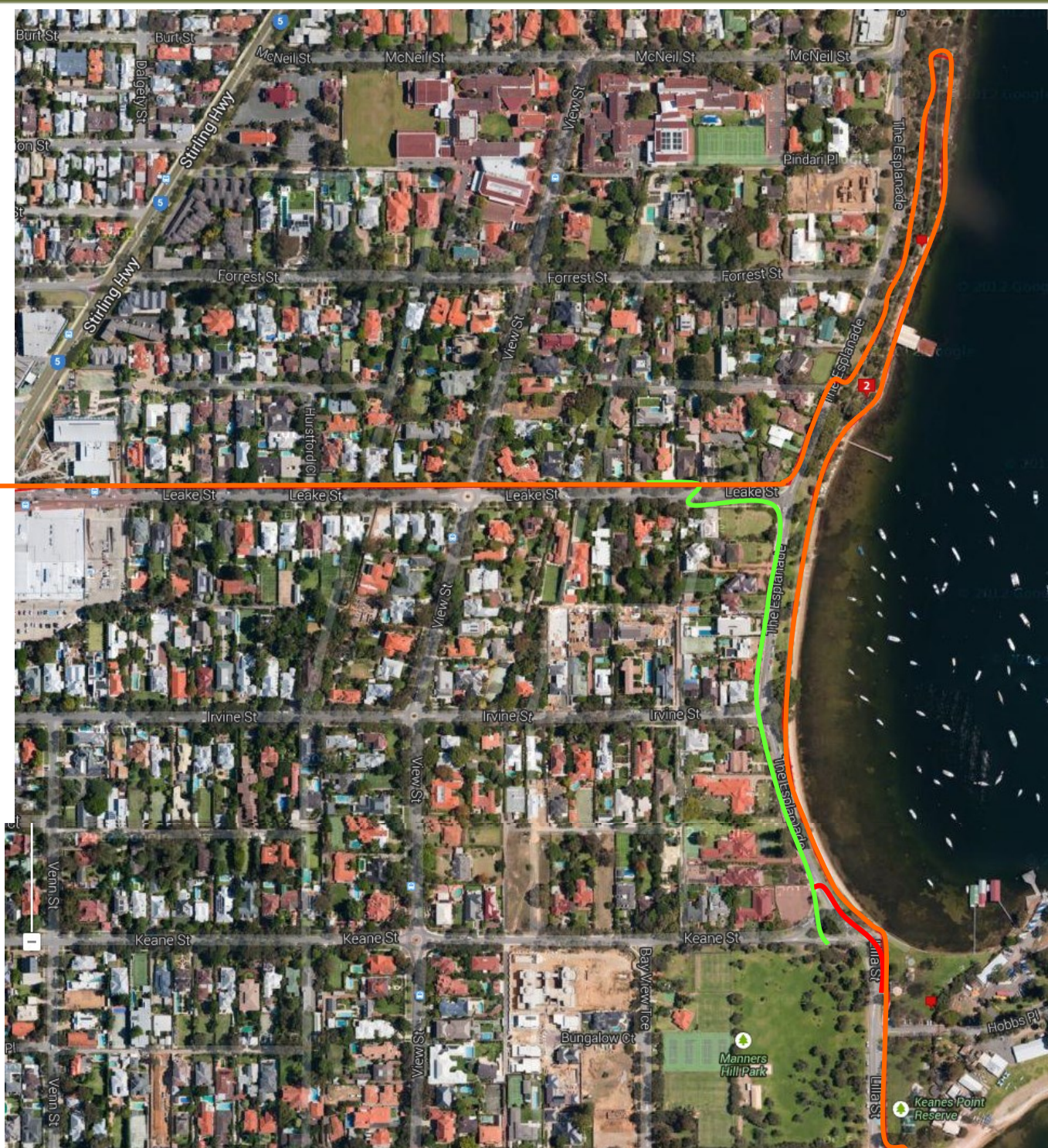


# Whadjuk Trail Network

[www.whadjukwalkingtrails.org.au](http://www.whadjukwalkingtrails.org.au)



## Wheelchair accessibility on Wardun Beelie Bidi

- Wardun Beelie Bidi
- Alternate Wheelchair accessible route
- Alternate Cycle suggested route
- Area currently under upgrade

### Peppermint Grove

The section excluded has steep sections on the upper path with the lower path constructed from crushed limestone. They are connected by a set of stairs at the northern end. The alternate option is to cross the road as demarcated above (green route) and continue southwards on the western side of The Esplanade as this sector is walked on grass. Bicycles turning north at the Esplanade may need to dismount to go down the small set of stairs at the northern-most link.

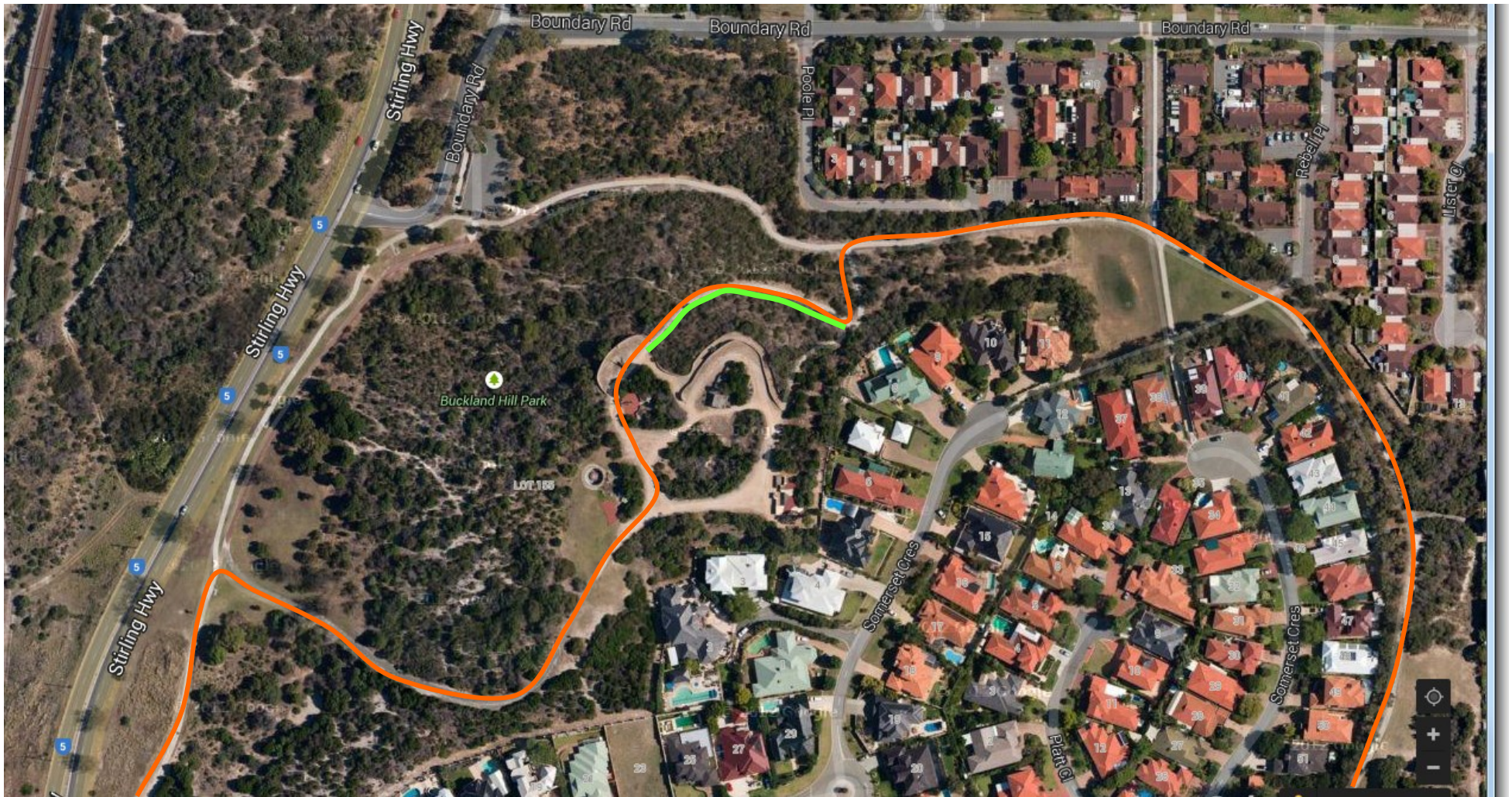
The sector marked in red at the base of Keane Street currently has no dedicated pathway for wheelchairs. The road will need to be crossed and followed on the eastern side for about 80 meters.





# Whadjuk Trail Network

[www.whadjukwalkingtrails.org.au](http://www.whadjukwalkingtrails.org.au)



## Section 2 BUCKLAND HILL

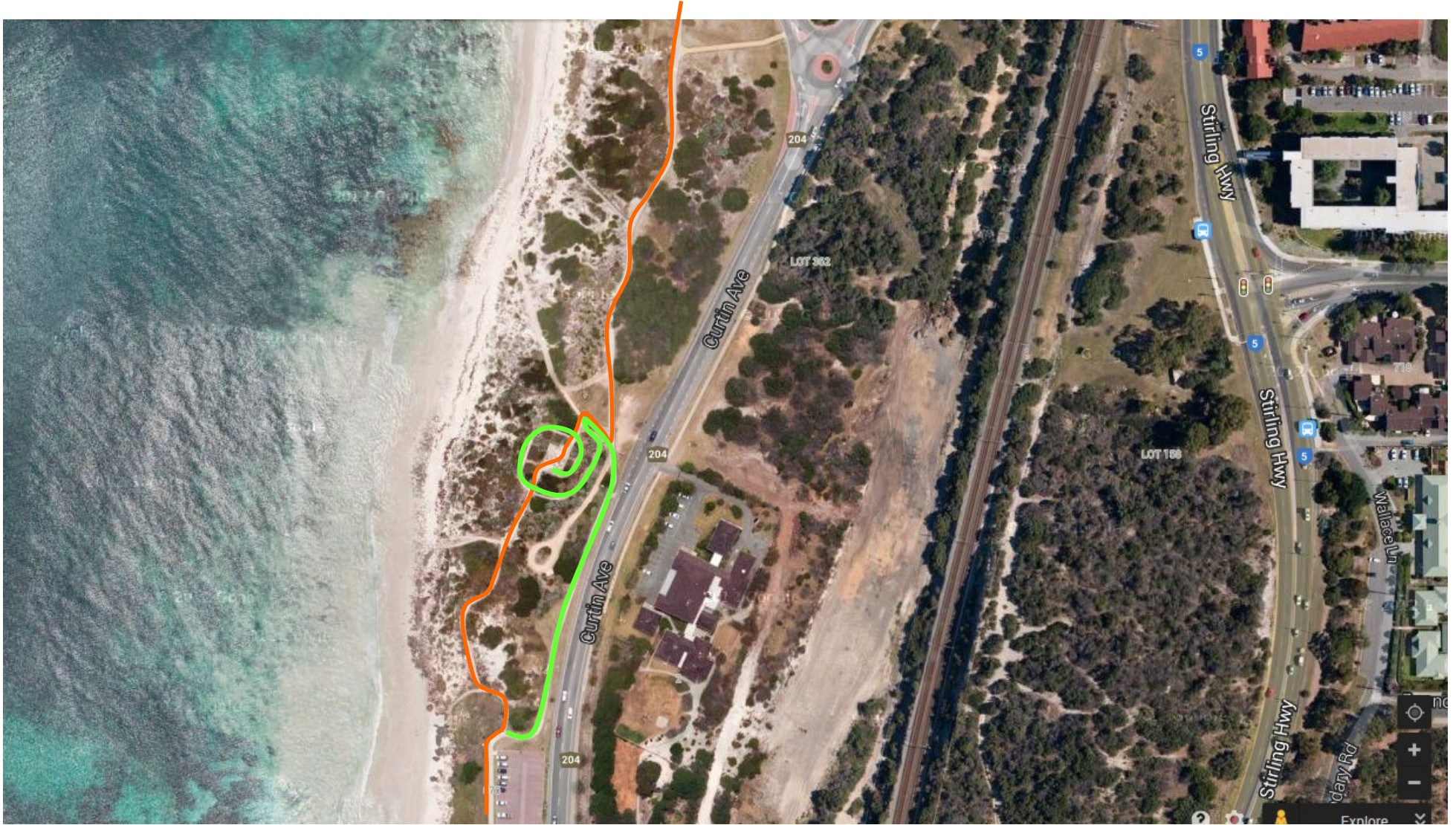
An interesting section with wonderful views and steeped in history. The path is a little steeper than ideal for the highlighted sector, however has no steps and is sealed.





# Whadjuk Trail Network

[www.whadjukwalkingtrails.org.au](http://www.whadjukwalkingtrails.org.au)



## Section 3

This is the crossover point between Town of Mosman Park and Town of Cottesloe. Both bicycles and wheelchair access is restricted for this short segment. The section includes Vlamingh's Landing and the connection point of telecommunications to Africa. This can be reached however please be aware that wheelchair access up to the viewing is uneven. Follow the green route along the road as the marked trail includes steps and a section walked on narrow sand.

